

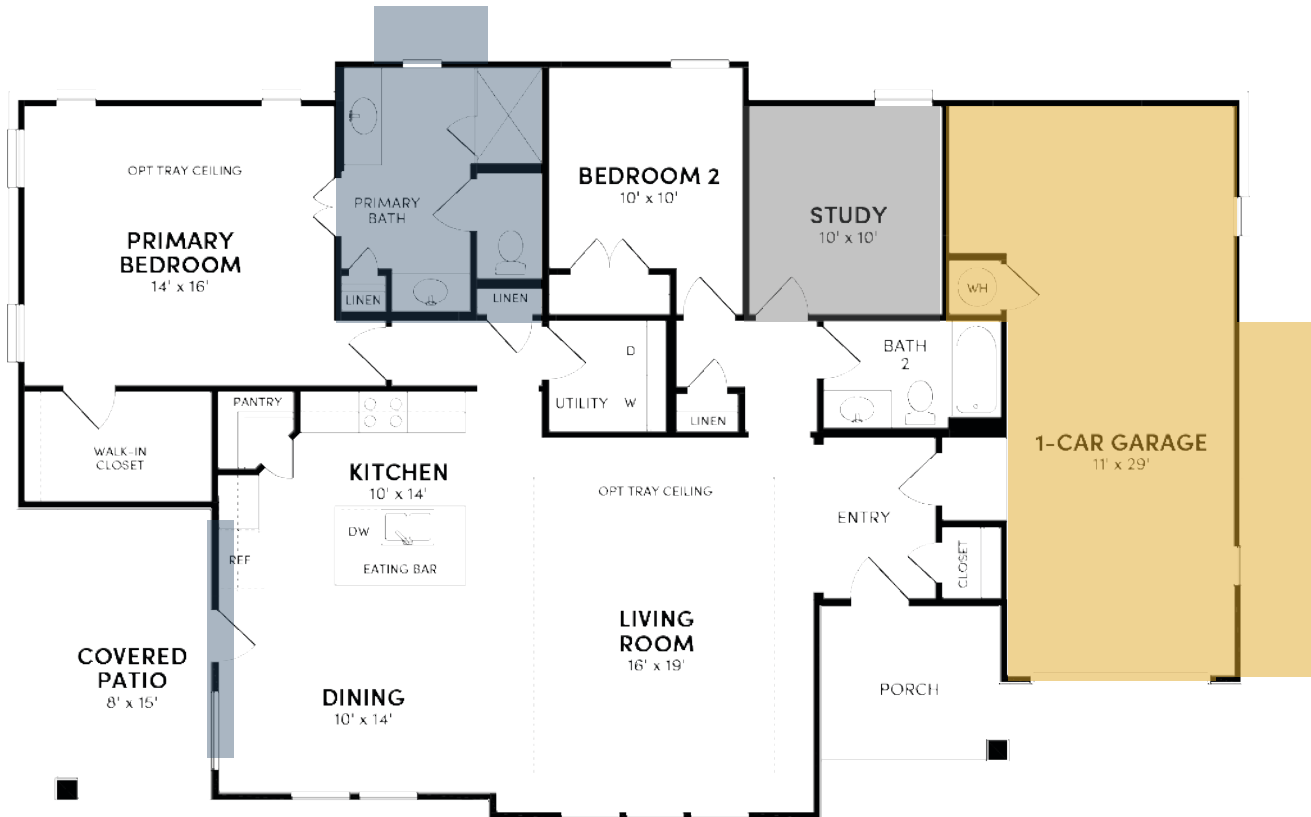
Brookfield Residential

# Welcome to the Whitworth.

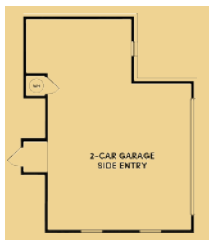


## Floor Plan Details

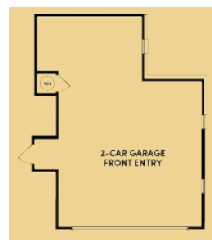
1,602 sq. ft. | 2 bedroom | 2 baths | Study | 2-car garage



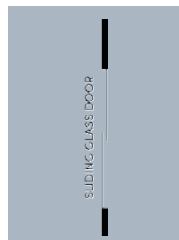
## Additional Options:



2-car Side Entry Garage



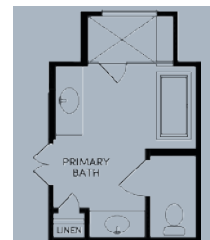
2-car Front Entry Garage



Sliding Glass Door



Primary Shower Seat



Primary Bath w/ Tub



Bedroom 3



**Texas Hill Country**



**Modern Prairie**



**Modern Farmhouse**



**BrookfieldTX.com | 512-960-2047**

The total number, layout, design and location of homes; unit mix; and the location, design and layout of recreational facilities may be changed due to a number of circumstances, including governmental requirements and market demand. Dimensions are approximate in nature and are not intended for final reference. Brookfield Residential and its affiliates reserve the right to change homesites, floor plans and home prices and make modifications in materials and specifications at any time without prior notice. © 2025 Brookfield Residential Properties ULC. All rights reserved. REV. MAY 2025